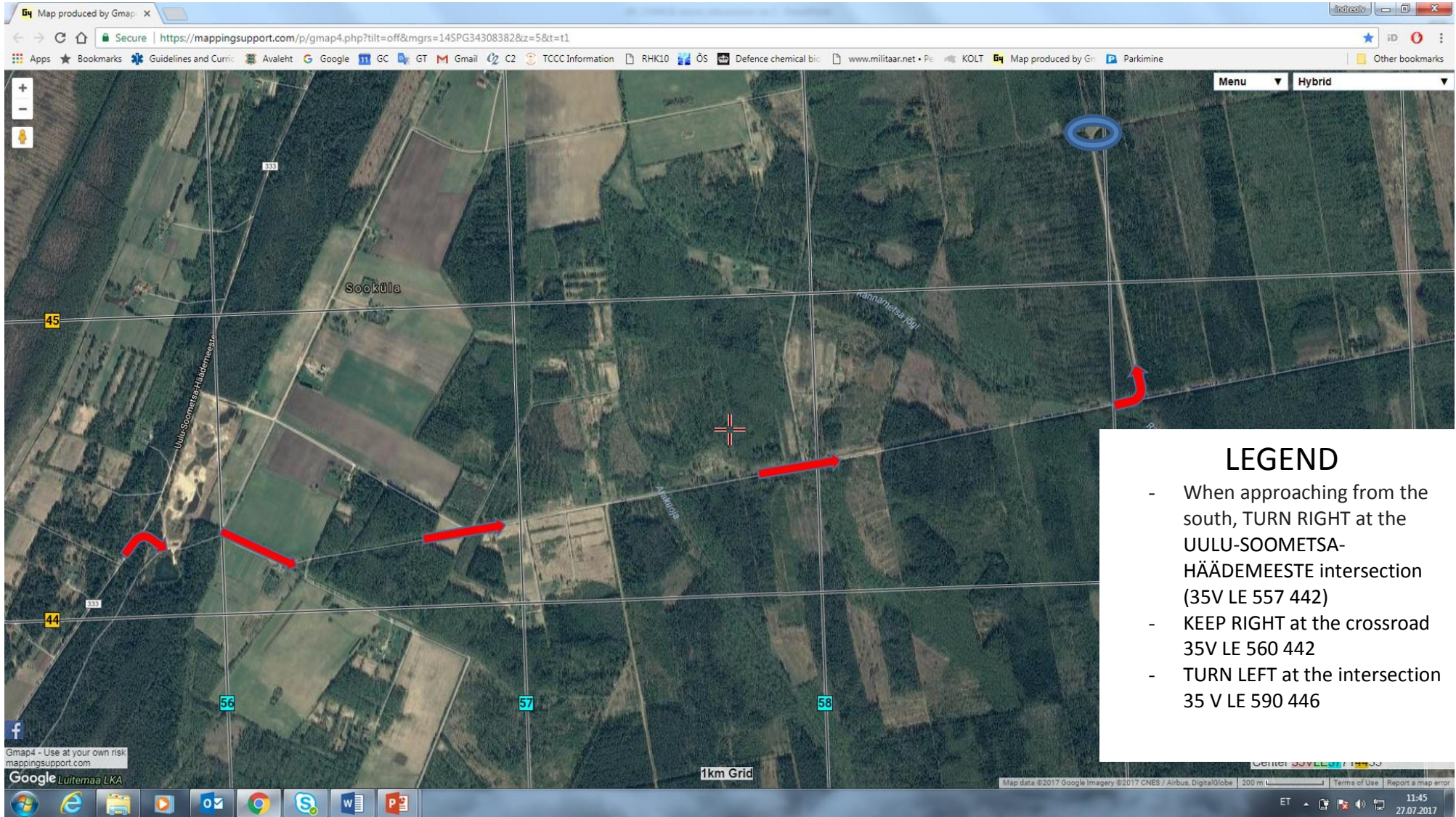


TEAM REPRESENTATIVES' ACTIVITY GUIDELINES AT CHECKPOINT CHARLIE

Grid Reference	Checkpoint Entrance Coordinates LE 590 455
Access permitted from	The competition team representative arrives at the checkpoint at the same time as the team.
Access to areas within the checkpoints	Access to the waiting area is allowed. Presence in the task-solving area is not allowed.
Approach routes and directions to the checkpoint	Approach to the checkpoint (Diagram 1): <ul style="list-style-type: none"> • When approaching from the south, TURN RIGHT at the UULU-SOOMETSA-HÄÄDEMEESTE intersection (35V LE 557 442) • KEEP RIGHT at the crossroad 35V LE 560 442 • TURN LEFT at the intersection 35 V LE 590 446
Parking	The parking area and representatives' waiting area is indicated in Diagram 2.
Activity or task at checkpoint	The team representative can assist in replenishing the team's water supply in the waiting area
Issuing of activity instructions to representatives	
Notes	The representative leaves the preparation area after the team moves into the task introduction and solving area.

Diagram 1



LEGEND

- When approaching from the south, TURN RIGHT at the UULU-SOOMETSA-HÄÄDEMEESTE intersection (35V LE 557 442)
- KEEP RIGHT at the crossroad 35V LE 560 442
- TURN LEFT at the intersection 35 V LE 590 446