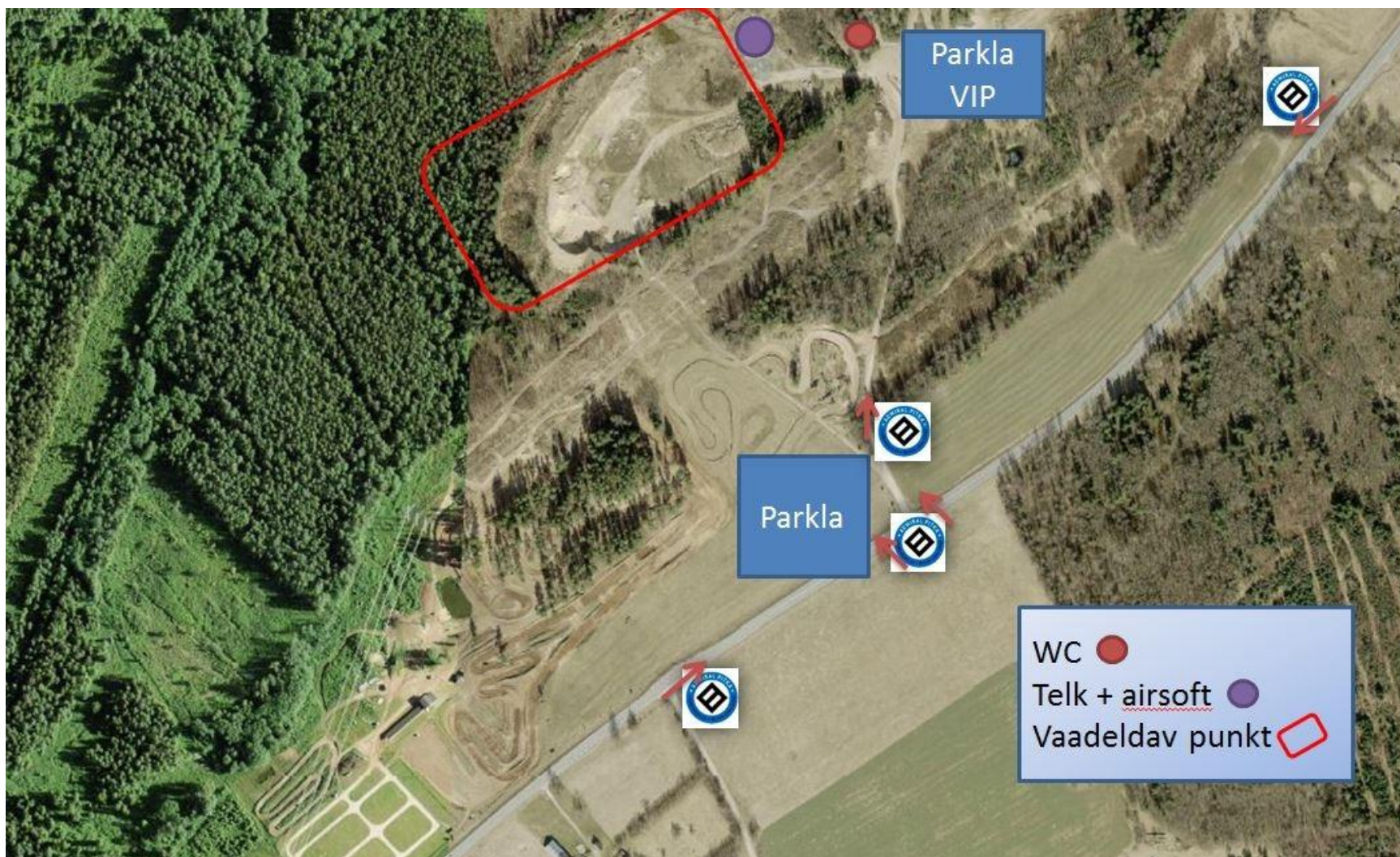


TEAM REPRESENTATIVES' ACTIVITY GUIDELINES AT CHECKPOINT FOXTROT	
Grid Reference	Checkpoint Entrance Coordinates LE 839 497
Access permitted beginning from	The competition team representative arrives at the checkpoint at the same time as the team.
Access to areas within the checkpoints	Access to the waiting area is allowed. Presence in the task-solving area is not allowed.
Approach routes and directions to the checkpoint	The approach to Checkpoint Foxtrot is from the Kilingi-Nõmme-Viljandi road after the LAURI bus stop. The onward approach to the checkpoint is according to the signposts.
Parking	Parking is in the car park. It is regulated on site.
Activity or task at checkpoint	The team representative will guard the team's equipment and weapons during task completion and can also assist in replenishing the team's water supply before the team enters the task-solving area.
Issuing of activity instructions to representatives	
Notes	The team representative may leave after the handover of weapons to the team.



Parkla
VIP

Parkla

WC ●
Telk + airsoft ●
Vaadeldav punkt □